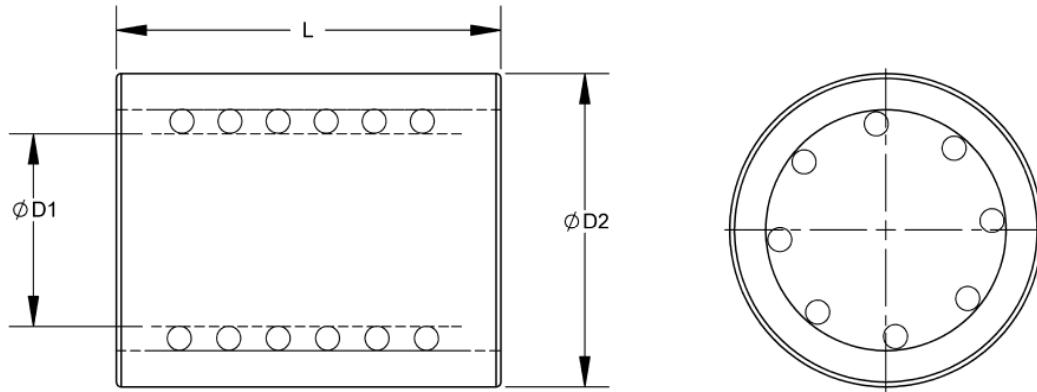


Case Hardened to 60 - 64 Rc



L	Diameter (D1)						
	1	1 1/4	1 1/2	1 3/4	2	2 1/2	3
2.50	B35.008.010						
3.00	B35.008.012	B35.010.012	B35.012.012				
3.50	B35.008.014	B35.010.014		B35.014.014			
3.75			B35.012.015				
4.00	B35.008.016	B35.010.016			B35.016.016		
4.25				B35.014.017			
4.50	B35.008.018	B35.010.018	B35.012.018				
4.75					B35.016.019		
5.00	B35.008.020	B35.010.020	B35.012.020	B35.014.020			
5.50			B35.012.022	B35.014.022	B35.016.022		
6.00		B35.010.024	B35.012.024	B35.014.024		B35.020.024	B35.024.024
6.25					B35.016.025		
6.75						B35.020.027	B35.024.027
7.00			B35.012.028	B35.014.028	B35.016.028		
7.50						B35.020.030	B35.024.030
8.00			B35.012.032	B35.014.032	B35.016.032		
8.50						B35.020.034	B35.024.034
9.00				B35.014.036	B35.016.036		
9.50						B35.020.038	B35.024.038
10.00					B35.016.040		
10.50						B35.020.042	B35.024.042
D2	1 7/8	2 1/8	2 1/2	2 3/4	3 1/4	3 3/4	4 1/4